

20-97

DEALERS PARTS CATALOG

A-10 EARTH AUGER
(2046500)

INDEX

AUGER GEAR DRIVE 5

CLUTCH 11

CLUTCH & HYDRAULIC KIT 7

DIGGER ARRANGEMENT. 3

MOUNTING & FRONT WEIGHT KIT 1

NUMERICAL INDEX 12

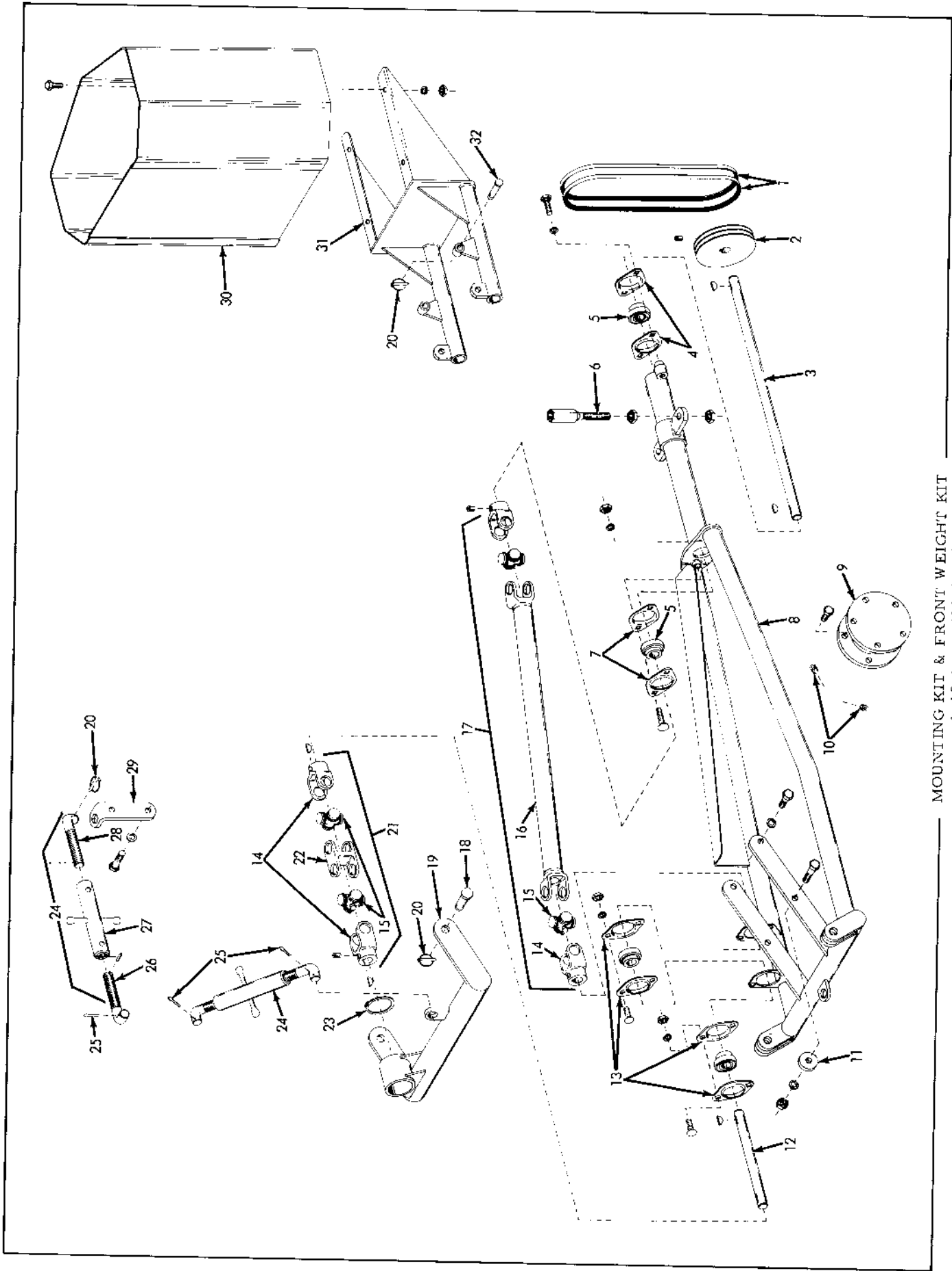
PUMP ASSEMBLY 9



BOX 512 • MILWAUKEE, WISCONSIN 53201

Litho in U.S.A.

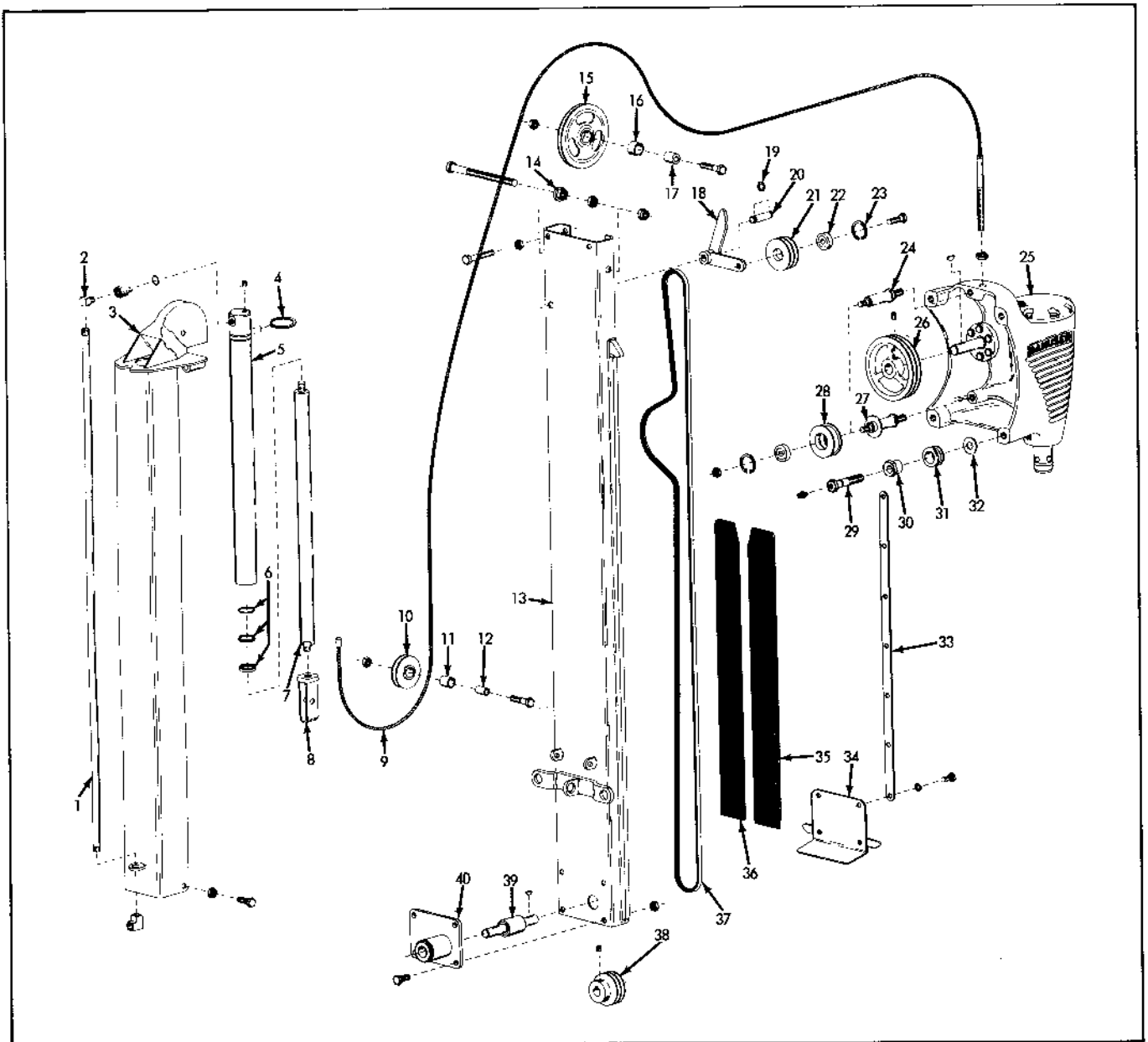
Form D-59-S3
(4-67)



MOUNTING KIT & FRONT WEIGHT KIT
 A-10 Auger (2046500)

MOUNTING KIT & FRONT WEIGHT KIT
A-10 Auger (2046500)

ITEM	PART NUMBER	QTY.	DESCRIPTION	ASSEMBLY OR PACKAGE NO.
-	{ 2046884	1	KIT, mounting (Incl. Items 1 thru 29)	
-	2046886	1	KIT, front weight (Incls. Items 20, 30, 31 & 32)	
1	2046954	1	BELT SET	
2	2046881	1	SHEAVE	
		1	902871 SETSCREW, 3/8NC x 1/2	
3	2046896	1	SHAFT, front	
		2	905123 KEY, woodruff, 3/16 x 3/4	
4	2046962	2	FLANGE	
		2	916431 BOLT, 5/16NC x 1	
		2	917356 LOCKWASHER, 5/16	
5	2046961	4	BEARING	
6	2046895	2	BOLT, extension	
		2	916950 NUT, 3/8NC	
7	2046962	2	FLANGE	
		2	919324 BOLT, cge, 5/16NC x 1-1/2	
		2	917356 LOCKWASHER, 5/16	
		2	917372 NUT, 5/16NC	
8	2046874	1	SUBFRAME	
		2	916609 BOLT, 7/16NC x 1-3/4	
		2	919364 BOLT, 7/16NC x 2-1/4	
		4	918199 LOCKWASHER, 7/16	
		2	918213 NUT, 7/16NC	
9	{ 2046868	1	KIT, hub extension (Incl. EXTENSIONS & BOLTS)	
	2046867	2	EXTENSION	
		10	919428 BOLT, 7/16NC x 1	
10	925299	2	SETSCREW, 7/16NC x 1/2	
11	2046822	1	SPACER	
12	2046897	1	SHAFT, rear	
		2	905123 KEY, woodruff, 3/16 x 3/4	
13	2046962	4	FLANGE	
		2	919414 BOLT, cge, 5/16NC x 3/4	
		2	917356 LOCKWASHER, 5/16	
		2	917372 NUT, 5/16NC	
14	2046959	4	YOKE	
		1	902871 SETSCREW, 3/8NC x 1/2	
15	2046958	4	KIT, repair	
16	2046945	1	TUBE ASSY.	
17	2046842	1	U-JOINT ASSY. (Incls. Items 14, 15 & 16)	
18	2046899	2	PIN, 5/8 x 1-5/8	
19	2046882	1	BAR, mounting	
20	2046803	7	KLIK-PIN	
21	2046953	1	U-JOINT ASSY. (Incl. Items 14, 15 & 22)	
22	525306	1	CENTER, double	
23	3011954	1	SNAP RING	
24	2046863	2	LINK, pitch (Incl. Items 26, 27 & 28)	
25	918549	3	PIN, cotter, 3/16 x 1-1/4	
26	2046860	2	SCREW, L.H.	
		1	916169 PIN, roll, 3/16 x 3/4	
27	2046862	2	PIPE ASSY.	
28	2046861	2	SCREW, R.H.	
29	2046877	1	BRACKET, top link	
		2	916609 BOLT, 7/16NC x 1-3	
		2	918199 LOCKWASHER, 7/16	
30	2046864	1	BOX, weight	
		4	907731 BOLT, 3/8NC x 1	
		4	916965 LOCKWASHER, 3/8	
		4	916950 NUT, 3/8NC	
31	2046887	1	BRACKET, box	
32	2046891	4	PIN, 3/8 x 1-11/16	



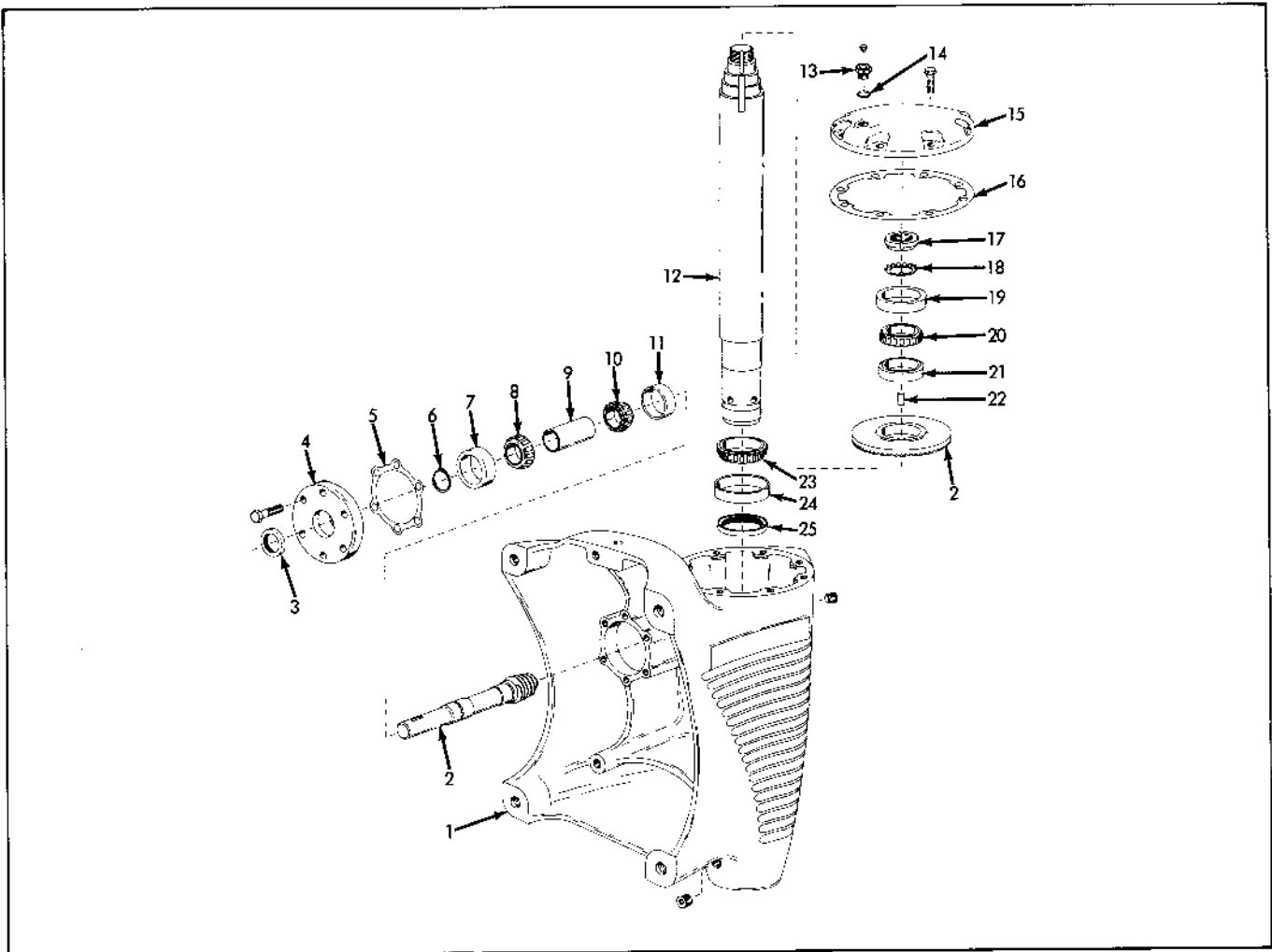
DIGGER ARRANGEMENT
A-10 Auger (2046500)

ITEM	PART NUMBER	QTY.	DESCRIPTION	ASSEMBLY OR PACKAGE NO.
-	2046974	1	DIGGER ARRANGEMENT (Incls. Items 1 thru 40)	
1	2046852	1	PIPE	
		1	925096 ELBOW, 1/4	
2	2046851	1	ELBOW	
		1	921883 O-RING, 1/32 x 1/2	
		1	925221 UNION, 1/4	
3	2046901	1	MOUNT ASSY.	
		2	919357 BOLT, 3/8NC x 7/8	
		2	916950 NUT, 3/8NC	
4	3011954	2	RING, snap	
	2046833	1	CYLINDER ASSY., (Incl. TUBE, PLUG & Items 6 & 7)	
	2046902	1	TUBE	
		1	917673 PLUG, 1/8	
6	2046900	1	KIT, seal	
7	2046903	1	ROD	
8	2046824	1	CLEVIS	
9	2046843	1	CABLE	
		2	916951 NUT, 1/2NC	

Continued

DIGGER ARRANGEMENT (Cont'd)
A-10 Auger (2046500)

ITEM	PART NUMBER	QTY.	DESCRIPTION	ASSEMBLY OR PACKAGE NO.
10	2046848	1	SHEAVE (Incl. 1 of Item 11)	
11	2046957	1	BUSHING	
12	2046850	1	SPACER	
			1 919360 BOLT, 3/8NC x 1-1/2	
			1 916950 NUT, 3/8NC	
13	2046828	1	CHANNEL ASSY.	
			2 918703 BOLT, 3/8NC x 3-1/4	
			2 916950 NUT, 3/8NC	
14	2046840	1	NUT, special	
			1 918355 BOLT, 1/2NC x 8-1/2	
			1 913744 NUT, jam, 1/2NC	
			1 920414 NUT, huglock, 1/2NC	
15	2046847	1	SHEAVE (Incl. 1 of Item 16)	
16	2046956	1	BUSHING	
17	2046849	1	SPACER	
			1 919360 BOLT, 3/8NC x 1-1/2	
			1 916950 NUT, 3/8NC	
18	2046839	1	ARM ASSY.	
			1 917400 BOLT, 3/8NC x 1-1/4	
19	2046948	2	RING, snap	
20	2046823	1	PIN	
21	2046827	1	SHEAVE	
22	2046963	3	BEARING	
23	3048068	3	RING, snap	
24	2046838	1	STUD	
			1 916950 NUT, 3/8NC	
25	-----	1	GEAR DRIVE AUGER (Refer to AUGER GEAR DRIVE For Components)	
26	2046825	1	SHEAVE	
			1 911233 KEY, woodruff, 3/16 x 7/8	
			1 905564 SETSCREW, 5/16NC x 3/8	
27	2046844	1	STUD ASSY.	
			1 916950 NUT, 3/8NC	
28	2046826	2	SHEAVE	
29	2046836	4	BOLT, special	
			1 914465 FITTING, str, 1/8	
30	2046835	4	BUSHING	
31	2046834	4	ROLLER	
32	2046837	4	WASHER, special	
33	2046830	2	CLAMP	
			7 907727 BOLT, 1/4NC x 5/8	
			7 916964 LOCKWASHER, 1/4	
34	2046947	1	GUARD ASSY.	
			2 907727 BOLT, 1/4NC x 5/8	
35	2046832	1	GUARD, L.H.	
36	2046829	1	GUARD, R.H.	
37	2046955	1	BELT SET	
38	2046946	1	SHEAVE	
			1 905564 SETSCREW, 5/16NC x 3/8	
39	2046841	1	JACKSHAFT	
			1 905123 KEY, woodruff, 3/16 x 3/4	
40	2046831	1	TRUNNION ASSY.	
			4 907731 BOLT, 3/8NC x 1	
			4 916950 NUT, 3/8NC	



AUGER GEAR DRIVE
A-10 Auger (2046300)

ITEM	PART NUMBER	QTY.	DESCRIPTION	ASSEMBLY OR PACKAGE NO.
-	2046821	1	GEAR DRIVE, auger (Incl. Item 1 thru 25)	
			1 918887 PLUG, pipe, 3/8	
			1 918850 PLUG, pipe, 1/4	
1	2046859	1	HOUSING, gear (Incl. Items 11 & 24)	
2	2046871	1	GEAR SET, spiroid	
			1 911233 KEY, woodruff, 3/16 x 7/8	
3	2046950	1	SEAL, grease	
4	2046857	1	CAP, pinion (Incl. 1 of Item 7)	
			6 919360 BOLT, 3/8NC x 1-1/2	
5	2046817	-	GASKET (.007) (Use as required)	
	2046818	-	GASKET (.005) (Use as required)	
6	535750	1	RING, snap	
7	2046966	1	CUP, bearing, pinion outer	
8	2046965	1	CONE, bearing, pinion outer	
9	2046819	1	SPACER	
10	517087	1	CONE, bearing, pinion inner	
11	241380	1	CUP, bearing, pinion inner	
12	2046845	1	SHAFT	
13	2046904	1	PLUG	
			1 918178 FITTING, relief, 1/8PT	
14	2046800	1	GASKET	
15	2046858	1	COVER, housing (Incl. 1 of Item 19)	
			8 917400 BOLT, 3/8NC x 1-1/4	
16	2046815	-	GASKET (.007 thick) (Use as required)	
	2046816	-	GASKET (.005 thick) (Use as required)	
17	2046952	1	LOCKNUT, bearing	

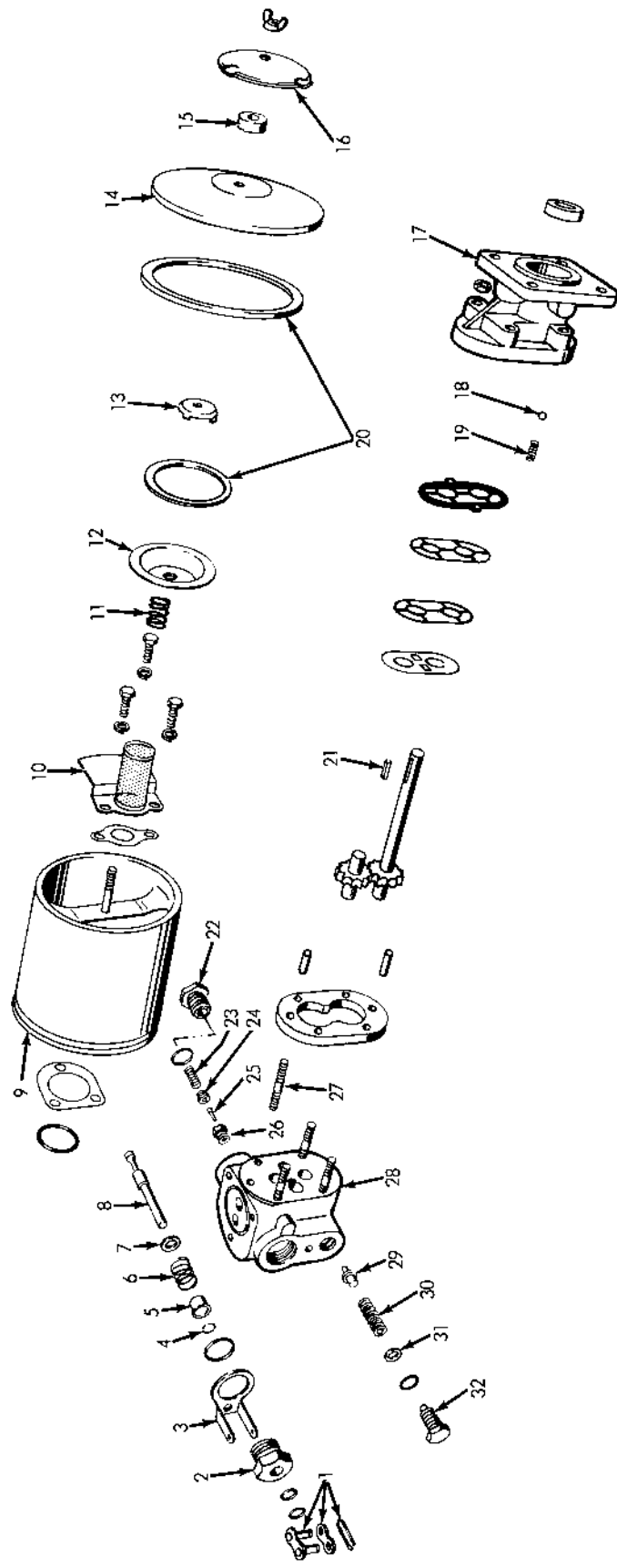
Continued

AUGER GEAR DRIVE (Cont'd)
A-10 Auger (2046500)

ITEM	PART NUMBER	QTY.	DESCRIPTION	ASSEMBLY OR PACKAGE NO.
18	2046951	1	LOCKWASHER, bearing	
19	227666	1	CUP, bearing, upper	
20	227665	1	CONE, bearing, upper	
21	2046820	1	SPACER	
22	2046967	1	KEY	
23	2046964	1	CONE, bearing, lower	
24	212037	1	CUP, bearing, lower	
25	2046949	1	SEAL, grease	

CLUTCH & HYDRAULIC KIT
A-10 Auger (2046500)

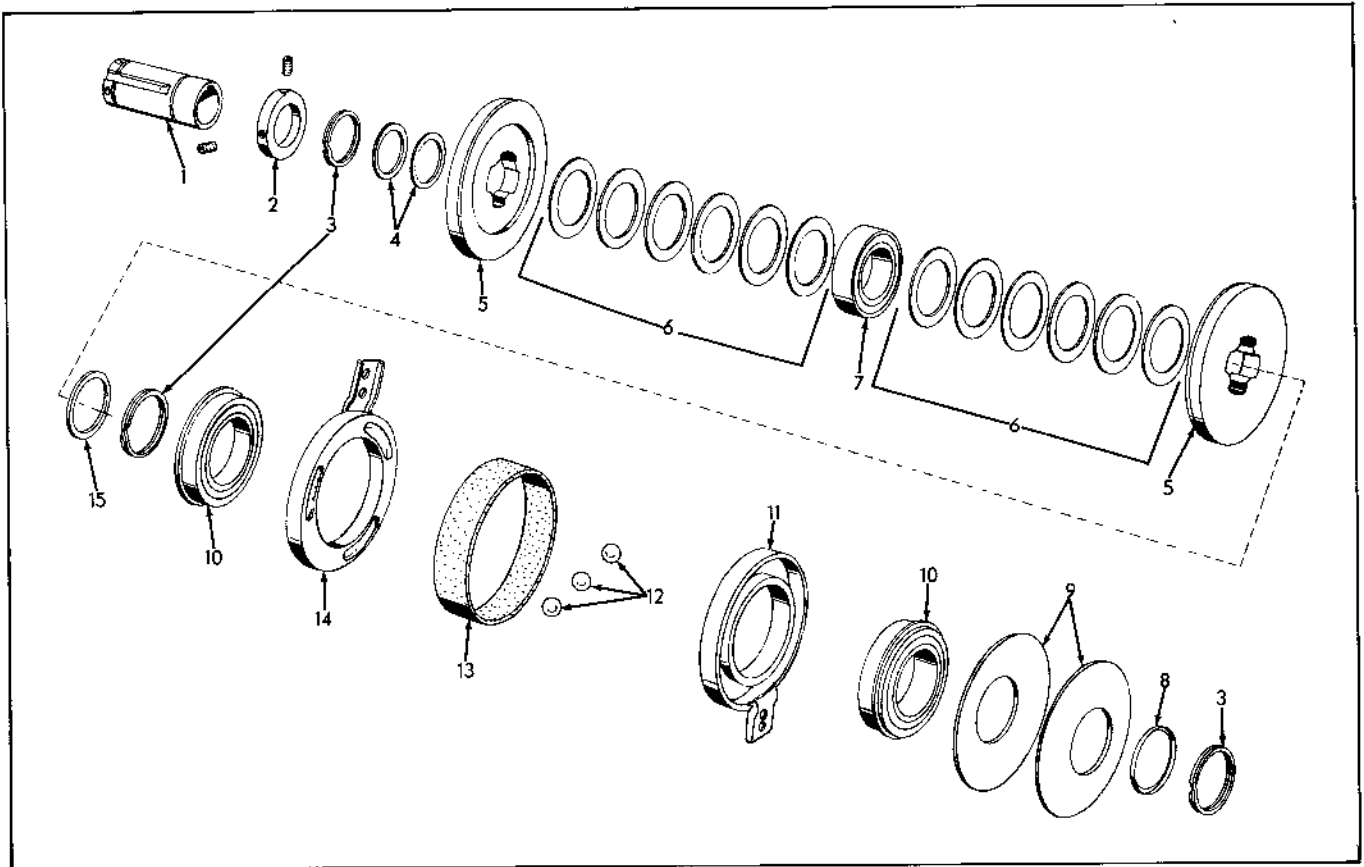
ITEM	PART NUMBER	QTY.	DESCRIPTION	ASSEMBLY OR PACKAGE NO.
-	2046885	1	KIT, clutch & hydraulic (Incl. Items 1 thru 23)	
1	2046960	1	HOSE, 1/4 x 87	
		1	925098 ADAPTER, union, 1/4	
		1	925222 ADAPTER, union, 3/4	
		1	921885 O-RING, 3/8	
		1	901751 CAP, pipe, 1/4	
2	925097	3	CLAMP, hose	
		1	916431 BOLT, 5/16NC x 1	
		1	917356 LOCKWASHER, 5/16	
		1	917372 NUT, 5/16NC	
		1	908127 BOLT, 3/8NC x 3/4	
		1	916965 LOCKWASHER, 3/8	
		1	916950 NUT, 3/8NC	
3	2046888	1	ROD, valve control	
		2	916602 NUT, 3/8NF	
4	917199	4	END, rod, 3/8	
		1	916965 LOCKWASHER, 3/8	
		1	916602 NUT, 3/8NC	
5	2056948	1	RING, snap	
6	2046893	1	LEVER, hydraulic control	
7	2046894	1	LEVER, clutch	
8	2046878	1	TRUNNION, lever	
		2	919351 BOLT, 1/4NC x 7/8	
		2	916964 LOCKWASHER, 1/4	
9	2046889	1	ROD, control, clutch rear	
		2	916602 NUT, 3/8NF	
10	2046898	1	LEVER, valve	
		1	916965 LOCKWASHER, 3/8	
		1	916602 NUT, 3/8NF	
11	2046866	1	PIN, 3/16 x 1-1/4	
		1	918445 PIN, cotter, 1/16 x 1/2	
12	-----	1	PUMP ASSY. (Refer to PUMP GROUP for Components)	
		4	916431 BOLT, 5/16NC x 1	
		4	918265 WASHER, 5/16	
		4	917356 LOCKWASHER, 5/16	
		4	917372 NUT, 5/16NC	
		1	905855 KEY, 1/4 x 1/4 x 1-1/4	
13	2046865	4	SPACER	
14	2046890	1	ROD, control, clutch, front	
		2	917979 END, rod, 5/16	
		2	917356 LOCKWASHER, 5/16	
		4	920263 NUT, 5/16NF	
15	228398	1	RING, snap	
16	2046892	1	BELLCRANK	
17	2046879	1	SHEAVE	
18	2046873	1	CLUTCH ASSY. (Incl. CLUTCH & Item 17)	
18	2046872	1	CLUTCH (Refer to CLUTCH GROUP for Components)	
19	2046880	1	SHEAVE, pump drive	
		1	911255 SETSCREW, 1/2NC x 3/4	
		1	905126 KEY, woodruff, 1/4 x 1	
20	189003	1	BELT	
21	2046876	1	ARM, clutch anchor	
		1	907727 BOLT, 1/4NC x 5/8	
		1	916964 LOCKWASHER, 1/4	
		1	916622 NUT, 1/4NC	
		1	907729 BOLT, 5/16NC x 1-1/4	
		1	917356 LOCKWASHER, 5/16	
22	2046869	1	SHEAVE	
		1	903835 SETSCREW, 1/4NC x 3/8	
23	2046875	1	BRACKET, pump	
		2	907729 BOLT, 5/16NC x 1-1/4	
		2	917356 LOCKWASHER, 5/16	



PUMP ASSEMBLY
 A-10 Auger (2046500)

PUMP ASSEMBLY
A-10 Auger (2046500)

ITEM	PART NUMBER	QTY.	DESCRIPTION	ASSEMBLY OR PACKAGE NO.
-	2046846	1	PUMP ASSY., (Incl. Items 1 thru 32, GASKETS & SEALS)	
1	913682	1	LINK, connecting, 5/8" pitch	
2	2046931	1	PLUG	
3	2046930	1	SUPPORT, handle	
4	2046970	1	RING, snap	
5	2046936	1	WASHER	
6	2046937	1	SPRING	
7	2046941	1	WASHER	
8	2046929	1	SPOOL	
9	2046920	1	TANK, reservoir	
			1 915015	NUT, wing, 1/4NC
10	2046921	1	FILTER ASSY.	
			3 903626	CAPSCREW, 5/16NC x 3/4
			3 917356	LOCKWASHER, 5/16
11	2046924	1	SPRING	
12	2046926	1	POCKET, filter	
13	2046922	1	CAP, filter	
14	2046925	1	LID ASSY.	
15	2046923	1	FILTER	
16	2046919	1	CAP, breather	
17	2046918	1	PLATE ASSY., front	
18	915906	2	BALL, 3/16	
19	2046917	2	SPRING	
20	2046944	1	KIT, gasket	
21	920994	1	KEY, 1/8 x 1/8 x 3/4	
22	2046928	1	PLUG	
23	2046916	1	SPRING	
24	2046940	1	CAP, plunger	
25	2046939	1	PLUNGER	
26	2046938	1	VALVE	
27	2046932	4	STUD	
			4 920435	NUT, 1/4NC
28	2046933	1	BODY ASSY.	
29	2046934	1	VALVE	
30	2046935	1	SPRING	
31	2046942	10	SHIM	
32	2046927	1	PLUG	
--	2046943	1	KIT, seal repair (Incl. Item 20 & All GASKETS & SEALS For Pump)	



CLUTCH
A-10 Auger (2046500)

ITEM	PART NUMBER	QTY.	DESCRIPTION	ASSEMBLY OR PACKAGE NO.
-	2046872	1	CLUTCH (Incl. Items 1 thru 15)	
1	2046906	1	HUB	
2	2046910	1	COLLAR	
		2	912235 SETSCREW, 1/4NC x 1/2	
3	2046968	3	RING, snap	
4	2046913	5	SHIM, adjusting	
5	2046915	2	PLATE, pressure	
6	2046914	10	SPRING, release	
7	2046971	1	BEARING, pulley	
8	2046969	1	RETAINER, snap ring	
9	2046909	2	SPRING, load	
10	2046972	2	BEARING, cam	
11	2046907	1	CAM, outer	
12	905361	3	BALL, 7/16	
13	2046912	1	COVER, cam	
14	2046908	1	CAM, inner	
15	2046911	1	WASHER	

NUMERICAL INDEX

Part No.	Page	Part No.	Page	Part No.	Page	Part No.	Page
189003...	8	925299...	2	2046891...	2	2046965...	5
212037...	6	2046800...	5	2046892...	8	2046966...	5
227665...	6	2046803...	2	2046893...	8	2046967...	6
227666...	6	2046815...	5	2046894...	8	2046968...	11
228398...	8	2046816...	5	2046895...	2	2046969...	11
241380...	5	2046817...	5	2046896...	2	2046970...	10
517087...	5	2046818...	5	2046897...	2	2046971...	11
525306...	2	2046819...	5	2046898...	8	2046972...	11
535750...	5	2046820...	6	2046899...	2	2046974...	3
901751...	8	2046821...	5	2046900...	3	3011954...	2, 3
902871...	2	2046822...	2	2046901...	3	3048068...	4
903626...	10	2046823...	4	2046902...	3		
903835...	8	2046824...	3	2046903...	3		
905123...	2, 4	2046825...	4	2046904...	5		
905126...	8	2046825...	4	2046906...	11		
905361...	11	2046826...	4	2046907...	11		
905564...	4	2046827...	4	2046908...	11		
905855...	8	2046828...	4	2046909...	11		
907727...	4, 8	2046829...	4	2046910...	11		
907729...	9	2046830...	4	2046911...	11		
907731...	2, 4	2046831...	4	2046912...	11		
908127...	8	2046832...	4	2046913...	11		
911233...	4, 5	2046833...	3	2046914...	11		
911255...	8	2046834...	4	2046915...	11		
912235...	11	2046835...	4	2046916...	10		
913682...	10	2046836...	4	2046917...	10		
913744...	4	2046837...	4	2046918...	10		
914465...	4	2046838...	4	2046919...	10		
915015...	10	2046839...	4	2046920...	10		
915906...	10	2046840...	4	2046921...	10		
916169...	2	2046841...	4	2046922...	10		
916431...	2, 8	2046842...	2	2046923...	10		
916602...	8	2046843...	3	2046924...	10		
916609...	2	2046844...	4	2046925...	10		
916622...	8	2046845...	5	2046926...	10		
916950...	2, 3, 4, 8	2046846...	10	2046927...	10		
916951...	3	2046847...	4	2046928...	10		
916964...	4, 8	2046848...	4	2046929...	10		
916965...	2, 8	2046850...	4	2046930...	10		
917199...	8	2046851...	3	2046931...	10		
917356...	2, 8, 10	2046852...	3	2046932...	10		
917372...	2, 8	2046857...	5	2046933...	10		
917400...	4, 5	2046858...	5	2046934...	10		
917673...	3	2046859...	5	2046935...	10		
917979...	8	2046860...	2	2046936...	10		
918178...	5	2046861...	2	2046937...	10		
918199...	2	2046862...	2	2046938...	10		
918213...	2	2046863...	2	2046939...	10		
918265...	8	2046864...	2	2046940...	10		
918355...	4	2046865...	8	2046941...	10		
918445...	8	2046866...	8	2046942...	10		
918549...	2	2046867...	2	2046943...	10		
918703...	4	2046868...	2	2046944...	10		
918850...	5	2046869...	8	2046945...	2		
918887...	5	2046871...	5	2046946...	4		
919324...	2	2046872...	8, 11	2046947...	4		
919351...	8	2046873...	8	2046948...	4, 8		
919357...	3	2046874...	2	2046849...	4, 6		
919360...	4, 5	2046875...	8	2046950...	5		
919364...	2	2046876...	8	2046951...	6		
919414...	2	2046877...	2	2046952...	5		
919428...	2	2046878...	8	2046953...	2		
920263...	8	2046879...	8	2046954...	2		
920414...	4	2046880...	8	2046955...	4		
920435...	10	2046881...	2	2046956...	4		
920994...	10	2046882...	2	2046957...	4		
921883...	3	2046884...	2	2046958...	2		
921885...	8	2046885...	8	2046959...	2		
925096...	3	2046886...	2	2046960...	8		
925097...	8	2046887...	2	2046961...	2		
925098...	8	2046888...	8	2046962...	2		
925221...	3	2046889...	8	2046963...	4		
925222...	8	2046890...	8	2046964...	6		